

We're Making Deals

OFFICE SPACE FOR LEASE



Riverpark Office Complex

New Marquee Coming Soon!

**FOR MORE
INFORMATION
CONTACT:**

Kent Clifford, CCIM
Broker/Owner

Cell: 702-612-9158

kent.clifford@cliffordcommercial.com

Jerry Shapiro

Salesman/Owner

Cell: 702-498-1195

jerry.shapiro@cliffordcommercial.com



Clifford Commercial Real Estate

6152 W Sahara Ave.

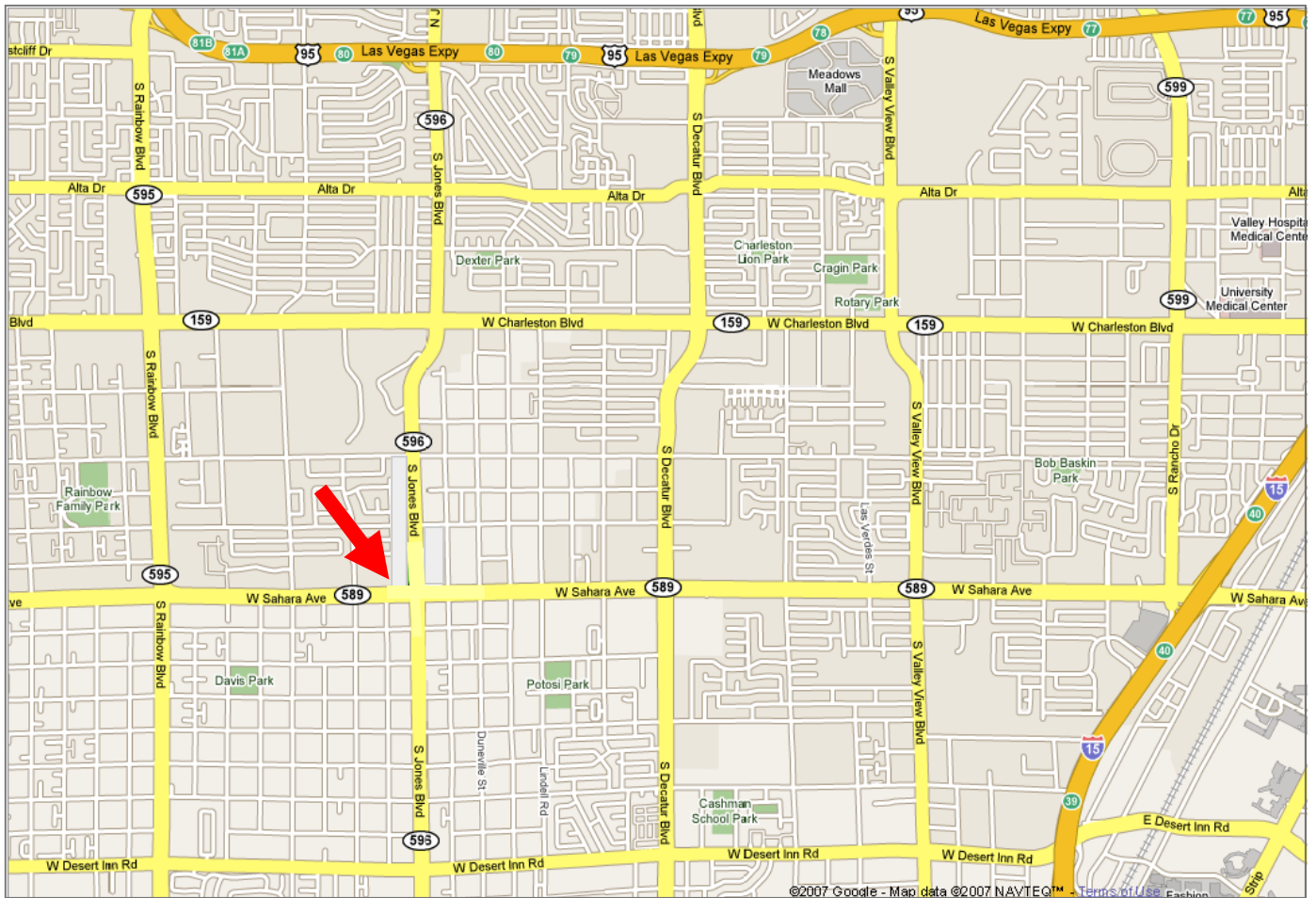
Las Vegas, NV 89146

702-889-9898

Fax: 702-889-9107

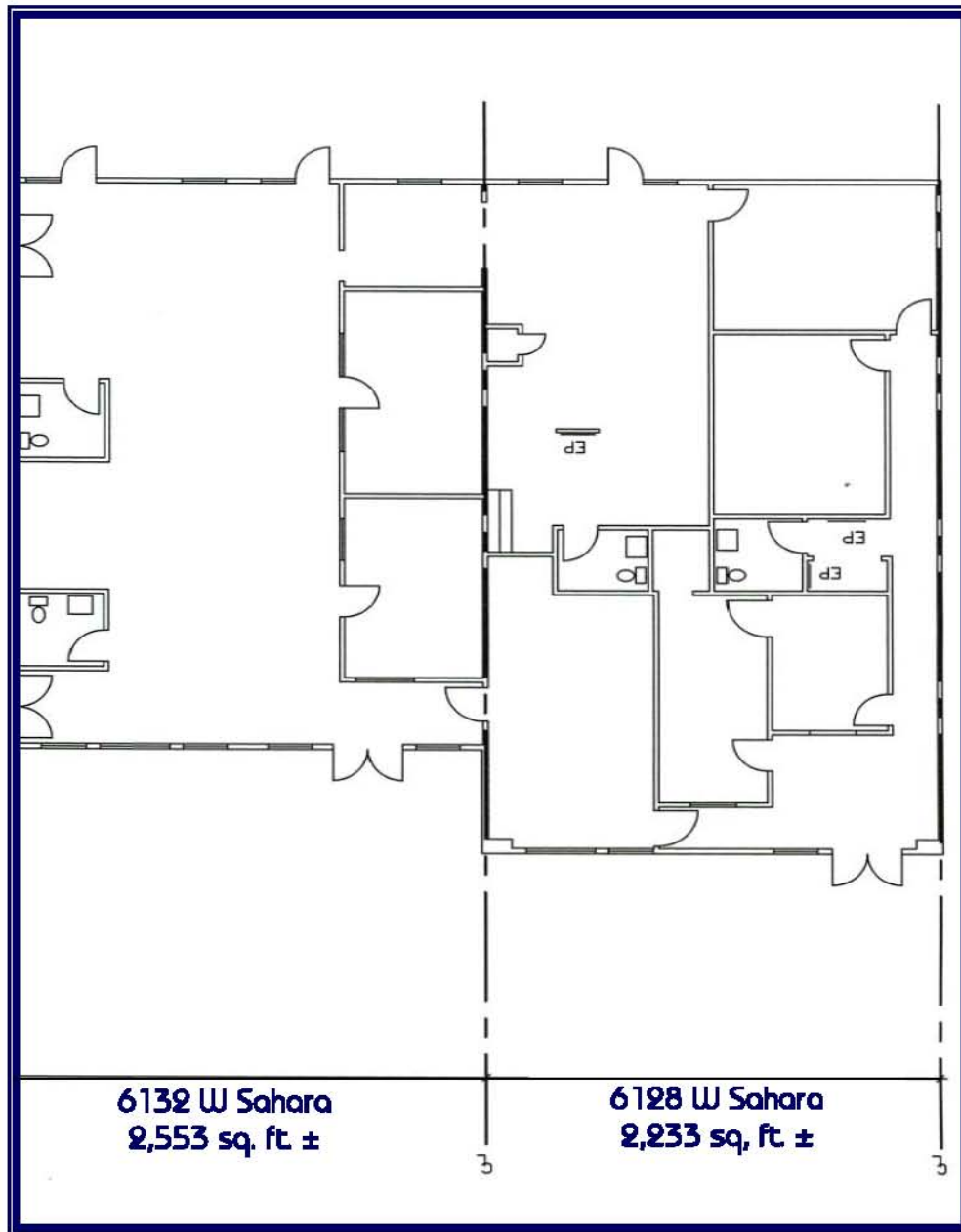
- Space Available: Ranging from 1,098 SF to 5,009 SF (see attached floor plans)
- NWC of Sahara Ave. and Jones Blvd.
- Conveniently Located—Easy Access
- C-1 Zoning—City of Las Vegas
- Free Rent
- Moving Expenses
- Tenant Improvement Allowance
- After Hours Security Officer
- Lush Landscaping
- Covered Parking Available
- Parking ratio: 4:1000
- Energy Saving/Security Film on all Windows and Doors
- Energy-saving Lights
- Management on Premises

Location Map—Riverpark Office Complex



Riverpark Office Complex

6128-6132 West Sahara Avenue, Las Vegas, NV 89149



Clifford Commercial Real Estate

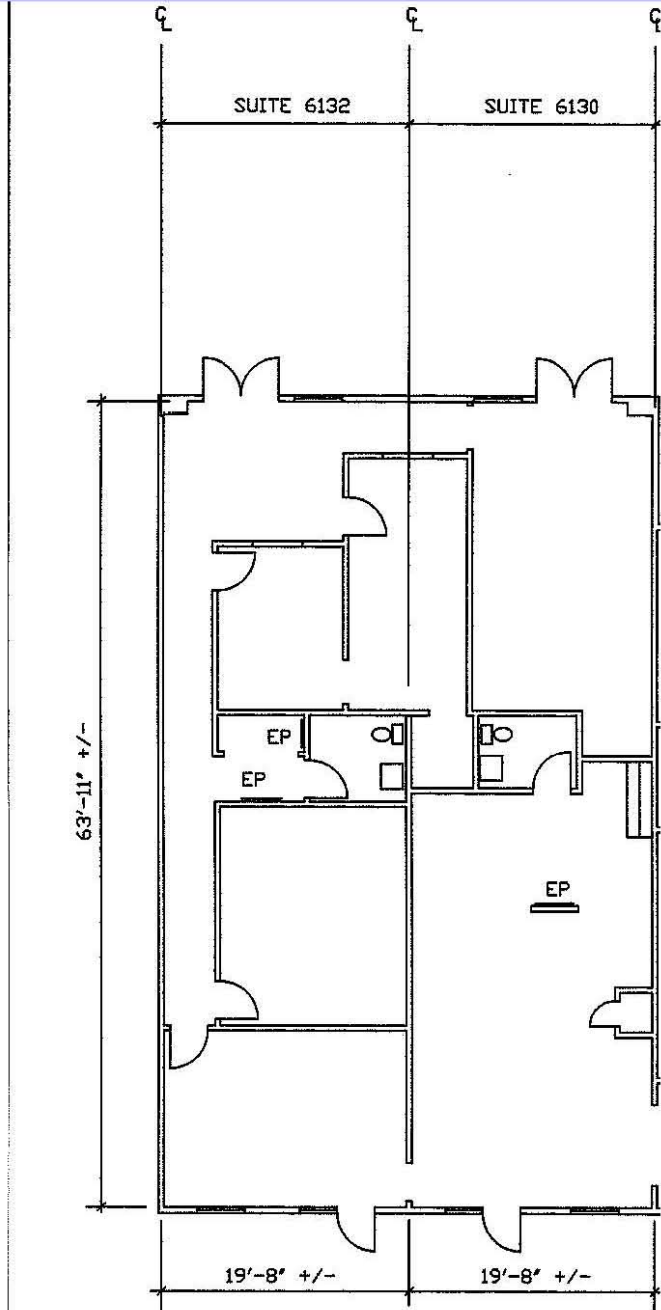
6152 West Sahara Avenue
Las Vegas, NV 89146

For leasing information please contact: Jerry Shapiro or Kent Clifford CCIM

702-889-9898

Riverpark Office Complex

6130-6132 West Sahara Avenue, Las Vegas, NV 89149



6130-6132 W Sahara
2,553 sq. ft. ±



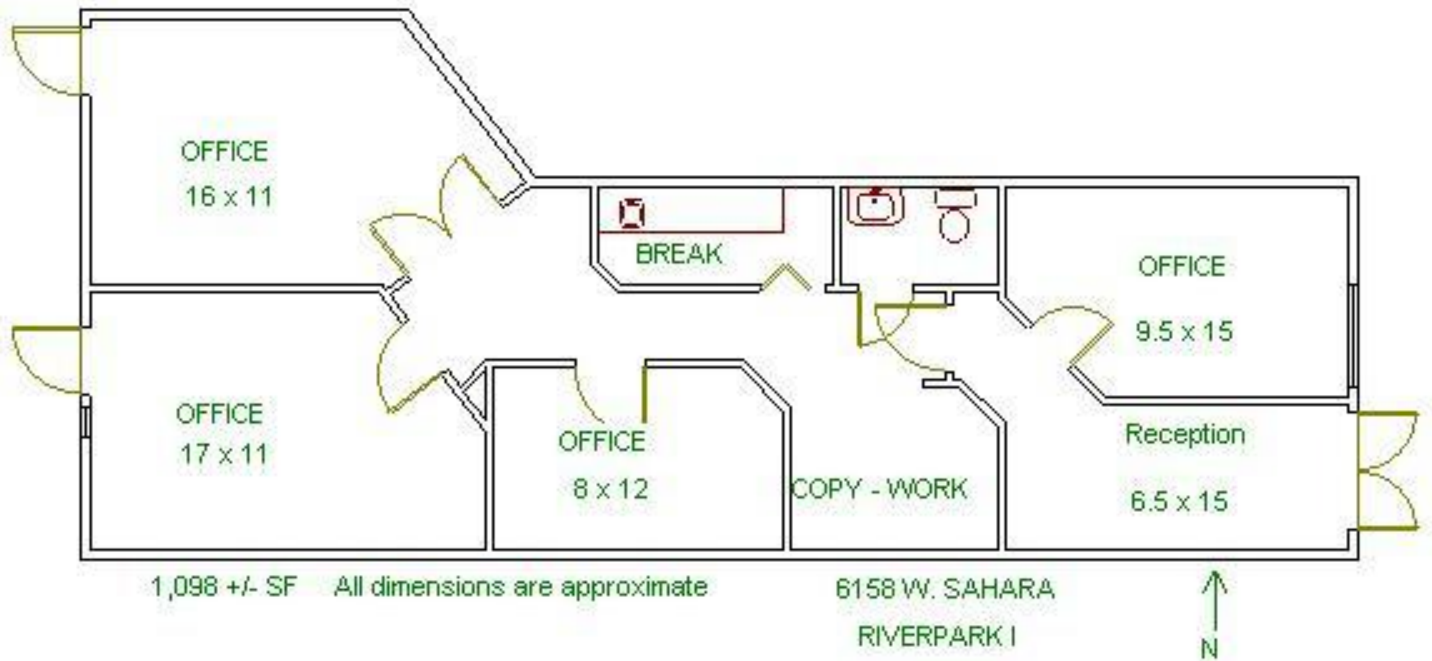
Clifford Commercial Real Estate
6152 West Sahara Avenue
Las Vegas, NV 89146

For leasing information please contact: Jerry Shapiro or Kent Clifford CCIM

702-889-9898

Riverpark Office Complex

6156 West Sahara Avenue, Las Vegas, NV 89149



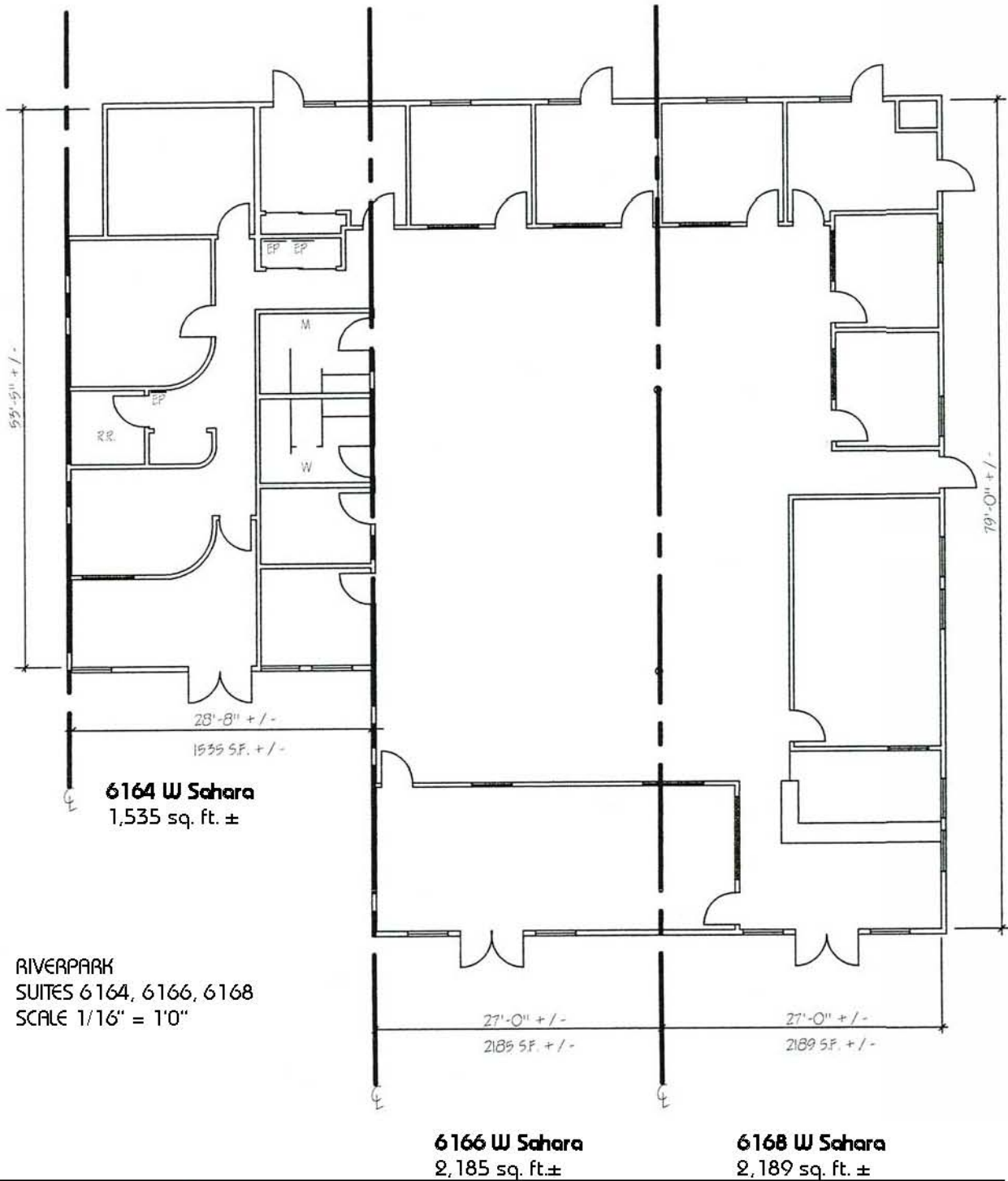
Clifford Commercial Real Estate
6152 West Sahara Avenue
Las Vegas, NV 89146

For leasing information please contact: Jerry Shapiro or Kent Clifford CCIM

702-889-9898

Riverpark Office Complex

6164-6168 West Sahara Avenue, Las Vegas, NV 89149



RIVERPARK
SUITES 6164, 6166, 6168
SCALE 1/16" = 1'0"



Clifford Commercial Real Estate

6152 West Sahara Avenue
Las Vegas, NV 89146

For leasing information please contact: Jerry Shapiro
Kent Clifford CCIM

702-889-9898